

OUR
PLANO ISD
 LEARNING COMMUNITY WILL
 EDUCATE, INSPIRE & EMPOWER
EVERY STUDENT
 TO ACTIVATE THEIR UNIQUE POTENTIAL
 IN A DYNAMIC WORLD.

PLANO ISD MISSION

Beliefs

The belief statements are the foundation for the vision of the district.

- ALL students are at the heart of our decisions.
- High expectations lead to growth and achievement for each student and staff member.
- Graduates must possess the skills and knowledge that prepare them to become responsible citizens and successful leaders.
- All students will utilize social, emotional and academic skills in order to become resilient and resourceful lifelong learners.
- The highest levels of learning occur when students are engaged in work that is relevant, authentic and challenging.
- Equity and access to equal opportunities are essential to reaching the highest levels of student achievement.
- As good stewards, we provide access to resources that enable each student to reach his/her aspirations.
- Our diverse, innovative and future-focused employees are the most valuable resource vital to the growth, care and success of each student.
- We embrace families, staff, students and our community in the shared responsibility of educating our children.
- Developing meaningful, collaborative relationships in a welcoming, safe and caring environment is essential for student success.
- Quality public education is the foundation of a thriving community.

PILLARS

Learning and Teaching • Life Ready • Talent Acquisition/Support and Growth
 Culture of Community • Strategic Resource Management



Plano ISD's promise to students is that they will leave the district
 college ready,
 career ready
 and life ready



Plano Independent School District
 Communications Department
 2700 W. 15th Street
 Plano, TX 75075
www.pisd.edu



Ranked
 Best Place to Work
 in Plano

Ranked
 "Top 10"

School District In Texas

Home to State, National and
 International Champions in:

- Science
- Fine Arts
- Career & Technical Education
- Athletics

95.7% 2018
 Graduation
 Rate



2020

District Update

PLANO INDEPENDENT SCHOOL DISTRICT

Plano ISD teachers
 average more than 11.7
 years of experience



36.5% of teachers
 hold a master's
 degree or above

Plano ISD
 families represent

100

languages
 spoken at
 home and

127

countries

Grade Level	# of Campuses
Preschools	3
Elementary Schools (K-5)	44
Middle Schools (6-8)	13
High Schools (9-10)	6
Senior High Schools (11-12)	3
Academy High School (9-12)	1
Special Programs Centers (K-8 & 9-12)	2
Total Number of Schools	72

Other Programs	
Plano Family Literacy School	1
Head Start	1
Special Education Adult Transition Center	1
Total Other Programs	3

Student Enrollment	
Elementary (early childhood-5)	23,955
Middle (6-8)	12,182
High (9-10)	8,315
Senior High (11-12)	8,072
Adult Transition Center (18-22)	105
Total Students	52,629
Total Number of Employees	7,031

SAT and ACT scores in Plano ISD
 exceed state and national averages

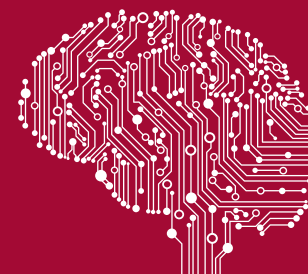
Plano ISD has 22 U.S. Presidential
 Scholar candidates for 2019



In school year 2018-19,
 Plano ISD served students
 1,182,314 breakfasts,
 4,203,242 lunches and
 90,817 suppers.



Bus fleet logs more than
3,200,000
 miles annually



80,000 wireless devices connect to
 the Plano ISD network daily | 55,000
 network logins per day





Average Expenditure per Student

\$9,226

STRONG FISCAL MANAGEMENT

Aaa/AA+

Highest stand-alone credit ratings carried by any school district in Texas



AVID

Advancement Via Individual Determination

closes achievement gaps by preparing all students for college readiness and success in a global society

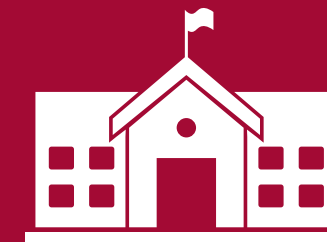
2,901 secondary students in AVID on 22 campuses
24 AVID elementary programs for 4th-5th grades

CORPORATE PARTNERSHIPS

Last year Plano ISD was supported by 42 corporate partnerships



Academic Choices



3,722 Senior High AP Students (47% of students)

1,406 Students in Dual Enrollment (over 3,228 courses) 57% Increase in 5 years

2,606 High School AP Students (32% of students)

189 Middle School AP Spanish Students

120 National Merit Semifinalists in 2020

14,421 AP Exams Taken 80% Scored 3 or Higher

PTA

Nearly 24,000 Members Strong

EDUCATION FOUNDATION

Since 1993, the Plano ISD Education Foundation has generated over

\$19.6 million

in private support for priority projects for which tax dollars are not available

Social emotional learning in Plano ISD is an educational process through which skills for life effectiveness are intentionally taught and modeled in a safe, supportive and culturally responsive environment

FINE ARTS



Plano ISD has been awarded one of the "Best 100 Communities for Music Education in America" in surveys conducted by national music and education organizations

New Fine Arts Center Opening School Year 2020-2021



A variety of sports teams, fine arts offerings and curricular and noncurricular clubs allow students to find their fit in Plano ISD



Social Emotional LEARNING
Whole District, Whole Child
PLANO ISD

IB World School at Huffman Elementary (grades PreK - 5): International education program that focuses on the whole child and explores globally significant ideas and issues

IB World School at Plano East (grades 9-12): Academically challenging and balanced program preparing students for success at university and beyond, with 690 diploma candidates last year

Industries Academy at the Collin College Technical Campus: Open in Fall 2020: Dual workforce credit instruction focusing on high-demand and high-wage career fields. Students will receive career-specific training and industry certifications while still in high school. Open to 10th graders during the 2020-21 school year

Academy High School (grades 9-12): Interdisciplinary project based learning with a focus on science, technology, engineering, art and math (STEAM)

Health Sciences Academy (grades 9-12): Preparing students for the workforce or a four-year, pre-medical program, offering college credit, technical certificates and hands-on experience with healthcare professionals

Plano ISD provides special education services for students with disabilities, ages 3-21, who have a need for specially designed instruction

More than 100 adult students with disabilities participate in life and workforce ready education program at Plano ISD's new Charmaine Solomon Adult Transition Center



Early childhood options available that educate kids starting at age

3

Free, Full-Day PreK

for students qualifying for free/reduced lunch



Expanding prek options for **4** year olds

Expanded preK has helped close achievement gaps for

1,900 early learners since 2016



20,000 students enrolled in Career & Technical Education courses, preparing for life and workforce readiness across multiple disciplines, earning **2,154 professional industry** certifications in 2018-19

Plano ISD's Heart of a Scholar program increases participation in advanced courses by providing students and parents who may not otherwise participate with resources to navigate advanced courses